



# ADAMS

ARMATUREN

**ADAMS Direct**  
Stock valves

Made in Germany

## MAK Triple offset valves

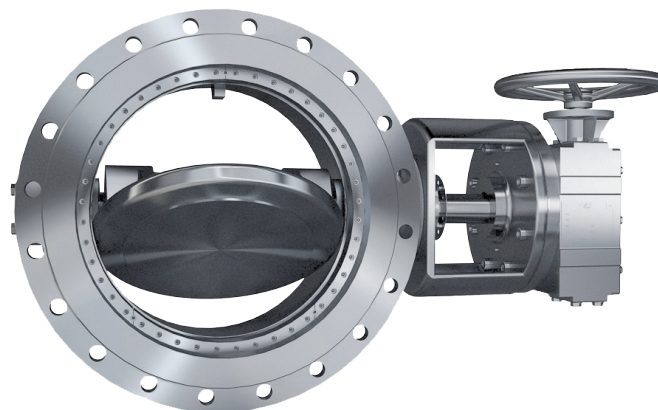
Looking for a widespread accepted triple offset valve with immediate availability to complete plant construction? Facing a challenging plant overhaul and looking for rush deliveries to finalize your shut down? Looking for availability of triple offset valves to minimize the risk of down time of your plant? Don't look further.

At ADAMS, we carry a wide range of MAK triple offset valves ranging from 3" – 48" readily available and tested according to relevant standards by the major end users in our industry.

ADAMS is able to ship your valued order within the shortest possible time from our strategic stock locations in Herne (GER) or Houston (US).

MAK stocked valve design and deliveries include the following items:

Design:	Metal Seated Triple offset valve, ASME 16.34, API 609, DIN EN, ATEX, Fire Safe ISO10497 + API 607, ISO 15848-1, SIL 3
Testing:	Seat Test API 598, Body Shell Test ASME 16.34, Cast : Body incl. NDE 10% UT, 100% MT (CS) or 100% PT (SS)
Face to face:	ISO 5752 series 13, 14 and ASME B 16.10
Documentation:	Dimensional -, cross sectional drawing and parts list ITP in accordance with ISO 9001
Certification:	Material – and test certificates according EN 10204/3.1 CE declaration of conformity for EU deliveries TC-RU – Technical Passport

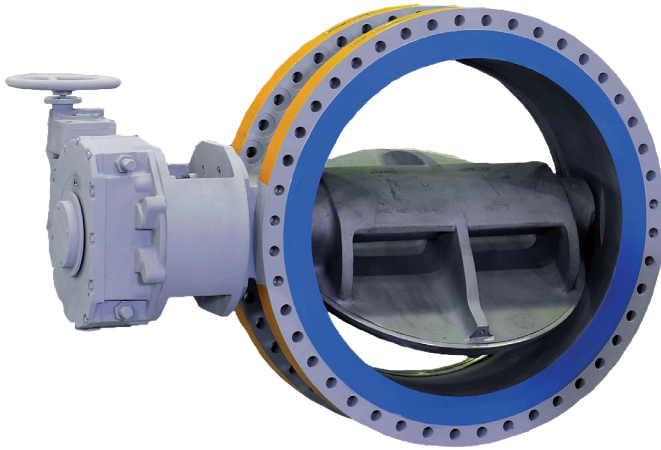


## Standard options

Our valves are tailor-made for each project, therefore no valve resembles another one. To fit all our customers needs, we offer our stock valves with a diverse broad range of standard options, such as:

- NACE trim
- Live-loaded packing
- Lubricated/purged bearings
- Steam heating jackets
- Steam tracing for shaft/disc
- High temperature gears
- Bracket extension/spindle extension
- Special coatings
- Chain wheels / locking device for hand wheels
- Actuation/instrumentation as per client specification

## MAK Carbon Steel stock availability



### ASME

Body: A 216 Gr WCB

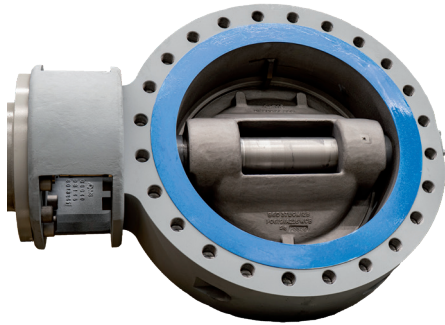
Disc:

≤ DN600 A351 CF8M

>DN600 WCB

Type	Carbon Steel		Flanged			BW Sch. 40		GATE	
	Inch	DN	#150	#300	#600	#150	#300	#150	#300
MAK	3"	80	STOCK	STOCK	STOCK	STOCK	STOCK	STOCK	STOCK
MAK	4"	100	STOCK	STOCK	STOCK	STOCK	STOCK	STOCK	STOCK
MAK	6"	150	STOCK	STOCK	STOCK	STOCK	STOCK	STOCK	STOCK
MAK	8"	200	STOCK	STOCK	STOCK	STOCK	STOCK	STOCK	STOCK
MAK	10"	250	STOCK	STOCK	STOCK	STOCK	STOCK	STOCK	STOCK
MAK	12"	300	STOCK	STOCK	STOCK	STOCK	STOCK	STOCK	STOCK
MAK	14"	350	STOCK	STOCK	STOCK	STOCK	STOCK	STOCK	
MAK	16"	400	STOCK	STOCK	STOCK	STOCK	STOCK	STOCK	
MAK	18"	450	STOCK	STOCK	STOCK	STOCK	STOCK	STOCK	
MAK	20"	500	STOCK	STOCK	STOCK	STOCK	STOCK	STOCK	
MAK	24"	600	STOCK	STOCK	STOCK	STOCK	STOCK	STOCK	
MAK	30"	750	STOCK	STOCK					
MAK	36"	900	STOCK						
MAK	42"	1050	STOCK						
MAK	48"	1200	STOCK						

## MAK Carbon Steel stock availability



### DIN EN

Body: A 216 Gr WCB

Disc:

≤ DN 600 A 351 CF8M

>DN 600 WCB

Double flanged: RF

Carbon Steel						
Type	Inch	DN	PN10	PN16	PN25	PN40
MAK	3"	80	STOCK	STOCK	STOCK	STOCK
MAK	4"	100	STOCK	STOCK	STOCK	STOCK
MAK	6"	150	STOCK	STOCK	STOCK	STOCK
MAK	8"	200	STOCK	STOCK	STOCK	STOCK
MAK	10"	250	STOCK	STOCK	STOCK	STOCK
MAK	12"	300	STOCK	STOCK	STOCK	STOCK
MAK	14"	350	STOCK	STOCK	STOCK	STOCK
MAK	16"	400	STOCK	STOCK	STOCK	STOCK
MAK	18"	450	STOCK	STOCK	STOCK	STOCK
MAK	20"	500	STOCK	STOCK	STOCK	STOCK
MAK	24"	600	STOCK	STOCK	STOCK	STOCK
MAK	28"	700	STOCK	STOCK	STOCK	STOCK
MAK	32"	800	STOCK	STOCK	STOCK	
MAK	36"	900	STOCK	STOCK	STOCK	
MAK	40"	1000	STOCK	STOCK	STOCK	
MAK	48"	1200	STOCK	STOCK		

## MAK Stainless Steel stock availability



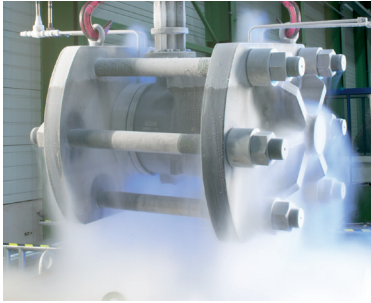
### ASME

Body: A 351 CF8M

Disc: A351 CF8M

Stainless Steel				
Type	Inch	DN	#150	#300
MAK	3"	80	STOCK	STOCK
MAK	4"	100	STOCK	STOCK
MAK	6"	150	STOCK	STOCK
MAK	8"	200	STOCK	STOCK
MAK	10"	250	STOCK	STOCK
MAK	12"	300	STOCK	STOCK
MAK	14"	350	STOCK	
MAK	16"	400	STOCK	
MAK	18"	450	STOCK	
MAK	20"	500	STOCK	
MAK	24"	600	STOCK	
MAK	30"	750		
MAK	36"	900		
MAK	42"	1050		
MAK	48"	1200		

## MAK Cryogenic valve stock availability



**ASME**

Body: A 351 CF8M

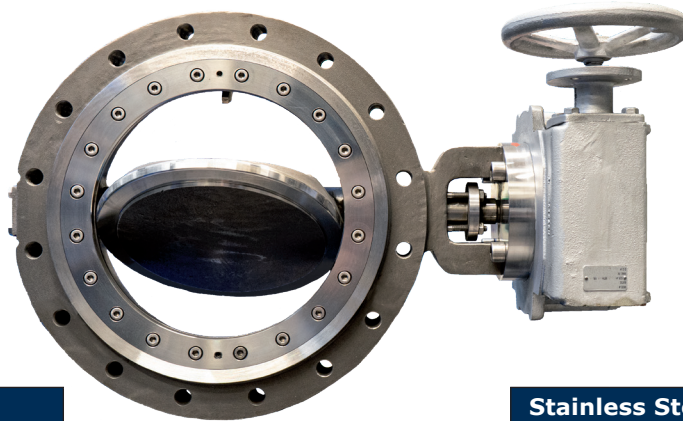
Disc: A 351 CF8M

Flanged: RF

**ASME Cryogenic valves**

Type	Inch	DN	#600
MAK	10"	250	STOCK
MAK	12"	300	STOCK
MAK	14"	350	STOCK

## WAK High performance Wafer Lugged stock availability



**ASME**

Body: A 216 GR WCB

Disc: A 351 CF8M

**ASME**

Body: A 351 CF8M

Disc: A 351 CF8M

**Carbon Steel Wafer Lugged**

Type	Inch	DN	#150	#300
WAK	3"	80	STOCK	STOCK
WAK	4"	100	STOCK	STOCK
WAK	6"	150	STOCK	STOCK
WAK	8"	200	STOCK	STOCK
WAK	10"	250	STOCK	STOCK
WAK	12"	300	STOCK	STOCK
WAK	14"	350	STOCK	STOCK
WAK	16"	400	STOCK	STOCK
WAK	18"	450	STOCK	STOCK
WAK	20"	500	STOCK	STOCK
WAK	24"	600	STOCK	STOCK

**Stainless Steel Wafer Lugged**

Type	Inch	DN	#150
WAK	3"	80	STOCK
WAK	4"	100	STOCK
WAK	6"	150	STOCK
WAK	8"	200	STOCK
WAK	10"	250	STOCK
WAK	12"	300	STOCK
WAK	14"	350	STOCK
WAK	16"	400	
WAK	18"	450	
WAK	20"	500	
WAK	24"	600	

## ADAMS - Serving you all over the world



If you wish to acquire one of these types of valves, please send your request for quotation to [info@adams-armaturen.de](mailto:info@adams-armaturen.de) or contact your local ADAMS representative.



### Contact information

#### ADAMS Armaturen GmbH

Baukauer Str. 55  
44653 Herne / Germany  
Tel +49 (0) 2323 209 0  
[www.adams-armaturen.de](http://www.adams-armaturen.de)  
[info@adams-armaturen.de](mailto:info@adams-armaturen.de)

#### ADAMS Valves Inc.

12303 Cutten Road  
Houston, Texas 77066  
Tel +1 (281) 453 3750  
[www.adamsvalves-usa.com](http://www.adamsvalves-usa.com)  
[sales@adamsvalves-usa.com](mailto:sales@adamsvalves-usa.com)

### Imprint

ADAMS Armaturen GmbH

As of June 2020 | All rights reserved | Contents are subject to change.